

---

# DEACCESSIONED OBJECTS

THE  
RUBIN  
MUSEUM  
OF  
ART

Updated September 30, 2015

---



The Worthy One, Shribhadra  
Arhat, Shribhadra  
Eastern Tibet; 19th century  
Pigments on cloth  
Rubin Museum of Art  
Gift of Shelley & Donald Rubin Foundation  
F1997.19.4 (HAR 292)  
*Deaccessioned 2015*



The Worthy One, Kanakabharadvaja  
Arhat, Kanakabharadvaja  
Tibet; 19th century  
Pigments on cloth  
Rubin Museum of Art  
Gift of Shelley & Donald Rubin Foundation  
F1997.19.5 (HAR 293)  
*Deaccessioned 2015*



Arhat  
China; 19th century  
Pigments on cloth  
Rubin Museum of Art  
Gift of Shelley & Donald Rubin Foundation  
F1996.27.8 (HAR 495)  
*Deaccessioned 2015*



Arhat  
China; 19th century  
Pigments on cloth  
Rubin Museum of Art  
Gift of Shelley & Donald Rubin Foundation  
F1996.27.9 (HAR 496)  
*Deaccessioned 2015*



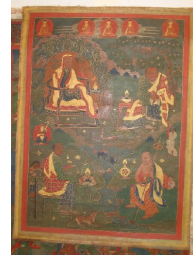
Arhat (The Worthy One), Ajita  
Tibet; 19th century  
Pigments on cloth  
Rubin Museum of Art  
Gift of Shelley and Donald Rubin  
C2006.66.272 (HAR 482)  
*Deaccessioned 2015*



Arhat (The Worthy One), Bakula  
Tibet; 18th century  
Pigments on cloth  
Rubin Museum of Art  
Gift of Shelley and Donald Rubin  
C2006.66.274 (HAR 520)  
*Deaccessioned 2015*



Four Arhats  
Tibet; ca. 18th century  
Pigments on cloth  
Rubin Museum of Art  
C2006.12.1 (HAR 65611)  
*Deaccessioned 2015*



Four Arhats  
Tibet; 19th century  
Pigments on cloth  
Rubin Museum of Art  
C2006.12.2 (HAR 65609)  
*Deaccessioned 2015*



Cabinet  
Tibet (?); 19th century  
Polychromed wood  
Rubin Museum of Art  
C2002.32.1  
*Deaccessioned 2015*



Cabinet  
Tibet (?); 19th century  
Polychromed wood  
Rubin Museum of Art  
C2002.32.2  
*Deaccessioned 2015*



Arhat, Kanakavatsa  
Tibet; 18th century  
Pigments on cloth  
Rubin Museum of Art  
Gift of Shelley & Donald Rubin Foundation  
F1996.33.3 (HAR 547)  
*Deaccessioned 2015*



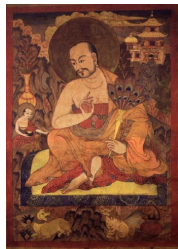
Arhat, Gopaka  
Tibet; 17th century  
Pigments on cloth  
Rubin Museum of Art  
Gift of Shelley & Donald Rubin Foundation  
F1996.33.4 (HAR 548)  
*Deaccessioned 2015*



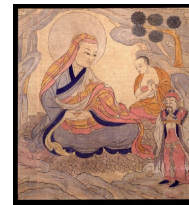
The Worthy One, Rahula  
Arhat, Rahula  
Tibet; 19th century  
Pigments on cloth  
Rubin Museum of Art  
Gift of Shelley & Donald Rubin Foundation  
F1997.17.1 (HAR 253)  
*Deaccessioned 2015*



The Worth One, Kanakabharadvaja  
Arhat, Kanakabharadvaja  
Tibet; 19th century  
Pigments on cloth  
Rubin Museum of Art  
Gift of Shelley & Donald Rubin Foundation  
F1997.17.2 (HAR 256)  
*Deaccessioned 2015*



Arhat, Vanavasini  
Tibet; 19th century  
Pigments on cloth  
Rubin Museum of Art  
Gift of Shelley & Donald Rubin Foundation  
F1997.41.3 (HAR 567)  
*Deaccessioned 2015*



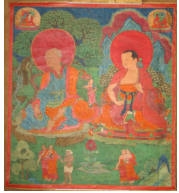
Arhat (The Worthy One), Ajita  
Tibet; Early 20th century  
Ground Mineral Pigment on Cotton  
Rubin Museum of Art  
Gift of Shelley and Donald Rubin  
C2006.66.324 (HAR 727)  
*Deaccessioned 2015*



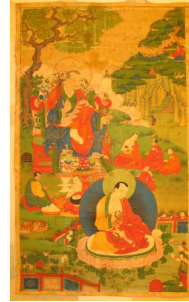
Arhat (Worthy One), Kanakabharadvaja  
Tibet; 19th century  
Pigments on cloth  
Rubin Museum of Art  
Gift of Shelley & Donald Rubin Foundation  
F1997.9.4 (HAR 136)  
*Deaccessioned 2015*



Arhat (Worthy One), Vajriputra  
Eastern Tibet; 19th century  
Pigments on cloth  
Rubin Museum of Art  
Gift of Shelley & Donald Rubin Foundation  
F1997.9.5 (HAR 153)  
*Deaccessioned 2015*



Two Arhats  
Tibet; 15th century  
Pigments on cloth  
Rubin Museum of Art  
C2004.5.3 (HAR 65321)  
*Deaccessioned 2015*



Arhats, Vanavasin and Kalika  
Tibet; 17th-18th century  
Pigments on cloth  
Rubin Museum of Art  
Purchased from the Collection of Navin  
Kumar, New York  
C2004.25.1 (HAR 65373)  
*Deaccessioned 2015*



Dhritarashtra, King of the Eastern Direction  
Tibet or China, Late 19th/ early 20th  
century  
Pigments on cloth  
Rubin Museum of Art  
Gift of Shelley and Donald Rubin  
C2006.66.133 (HAR 91)  
*Deaccessioned 2015*



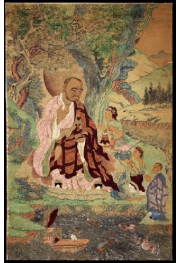
Mandala of Yamari, Rakta  
Tibet; 18th century  
Pigments on cloth  
Rubin Museum of Art  
Gift of Shelley and Donald Rubin  
C2006.66.148 (HAR 117)  
*Deaccessioned 2015*



The Enlightened One, Lord of the Shakya  
Clan, Shakyamuni Buddha  
Tibet; 18th century  
Pigments on cloth  
Rubin Museum of Art  
Gift of Shelley and Donald Rubin  
C2006.66.168 (HAR 175)  
*Deaccessioned 2015*



Arhats (The Worthy Ones), Ajita and  
Kanakavatsa  
Tibet; 17th century  
Pigments on cloth  
Rubin Museum of Art  
Gift of Shelley and Donald Rubin  
C2006.66.199 (HAR 225)  
*Deaccessioned 2015*



Arhat (The Worthy One), Vanavasin  
Eastern Tibet; 18th century  
Pigments on cloth  
Rubin Museum of Art  
Gift of Shelley and Donald Rubin  
C2006.66.206 (HAR 238)  
*Deaccessioned 2015*



Arhat (The Worthy One), Bakula  
Tibet; 19th century  
Pigments on cloth  
Rubin Museum of Art  
Gift of Shelley and Donald Rubin  
C2006.66.260 (HAR 378)  
*Deaccessioned 2015*



Arhat (The Worthy One), Vanavasin  
Tibet; 18th century  
Pigments on cloth  
Rubin Museum of Art  
Gift of Shelley and Donald Rubin  
C2006.66.312 (HAR 711)  
*Deaccessioned 2015*



Arhat (The Worthy One), Pantaka  
Tibet; 18th century  
Pigments on cloth  
Rubin Museum of Art  
Gift of Shelley and Donald Rubin  
C2006.66.333 (HAR 759)  
*Deaccessioned 2015*



Arhat (The Worthy One), Kanakavatsa  
Tibet; 18th century  
Pigments on cloth  
Rubin Museum of Art  
Gift of Shelley and Donald Rubin  
C2006.66.338 (HAR 764)  
*Deaccessioned 2015*



Arhat, (The Worthy One), Hvashang  
Tibet; 17th-18th century\*  
Pigments on cloth  
Rubin Museum of Art  
Gift of Shelley and Donald Rubin  
C2006.66.493 (HAR 959)  
*Deaccessioned 2015*



Arhat (Worthy One), Kanakavatsa  
Tibet; 18th century  
Pigments on cloth  
Rubin Museum of Art  
Gift of Shelley & Donald Rubin Foundation  
F1996.1.4 (HAR 427)  
*Deaccessioned 2015*



The Horse-Headed One  
Hayagriva  
Tibet; 19th century  
Pigments on cloth  
Rubin Museum of Art  
Gift of Shelley & Donald Rubin Foundation  
F1996.10.1 (HAR 431)  
*Deaccessioned 2015*



Deity  
Tibet; 18th century  
Copper alloy  
Rubin Museum of Art  
Gift of Shelley & Donald Rubin Foundation  
F1997.54.5 (HAR 700030)  
*Deaccessioned 2015*



Architectural Bracket with Two Yakshis  
India; 1st century B.C.E.  
Stone  
Rubin Museum of Art  
C2002.10.1 (HAR 65084)  
*Deaccessioned 2011*



Bodhisattva  
Gandhara style  
Stone  
Rubin Museum of Art  
F1997.39.8 (HAR 700017)  
*Deaccessioned 2011*



Arm  
Stone  
Rubin Museum of Art  
C2006.10.1  
*Deaccessioned 2011*



Relief  
Afghanistan  
Stone  
Rubin Museum of Art  
C2006.66.651 (HAR 700084)  
*Deaccessioned 2011*



Book Cover  
Tibet; 15th century  
Wood with pigments  
Rubin Museum of Art  
F1997.55.1 (HAR 700038)  
*Deaccessioned 2011*